

40-450 Watt

High efficiency monocrystalline silicon solar modules

0~+3% tolerance

ISO9001:2008, ISO14001:2004, OHSAS18001

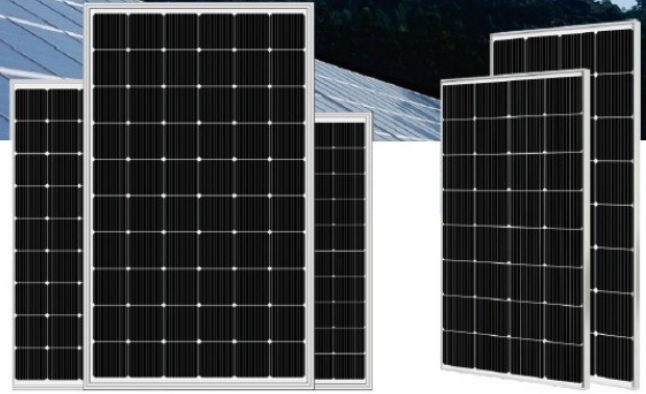
Factory certificates

IEC61215, IEC61730, UL1703 Product certificates



TRISOL[®] PERC 182 Cell 450W

SP120M-32



Solar module features



PERC 182 cells

Better capability of current collection, larger area of power generation, nice appearance, more suitable for installation on the roof.



High output power

Using PERC battery structure technology (Low resistance characteristics), output power of 60pcs monocrystalline cells reaches Max 450W (Highest Conversion efficiency to 20.9%)



Low light performance

Using excellent glass and texture surface making of solar cell, outstanding performance can be obtained in low light condition.

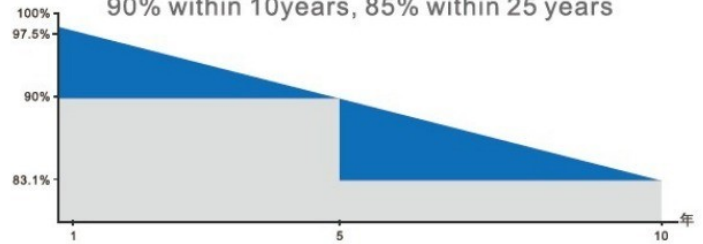


Adaptability of harsh environment

Corrosion tests have certified in high salt fog and high ammonia environment.

Guaranteed output power

90% within 10 years, 85% within 25 years



Module Picture



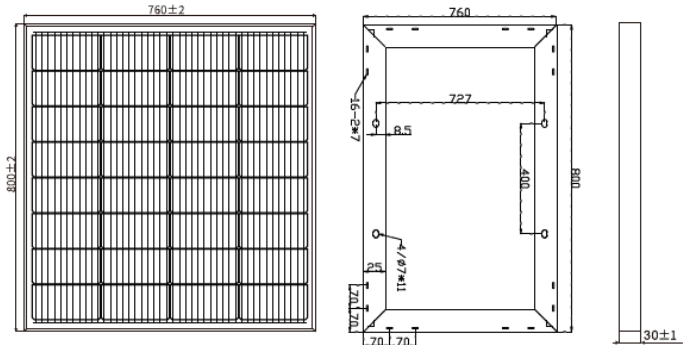
SP120M-32

Comprehensive Certificates

- IEC61215, IEC61730
- ISO9001:2015 Quality management systems
- ISO45001: Environmental management systems
- ISO45001:2018 Occupational health and safety management systems



Mechanical Diagrams



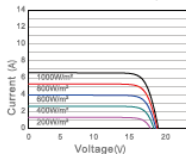
PS: Frame color and cable length can be customized

Electrical Parameters at (STC)

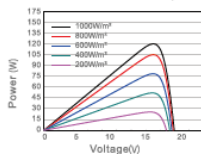
| Module | Power (W) | Module Efficiency(%) | Voltage at Pmax(Vmp) | Current at Pmax(Impp) | Open Circuit Voltage(Voc) | Short Circuit Current(Isc) | Power Tolerance(w) |
|--------|-----------|----------------------|----------------------|-----------------------|---------------------------|----------------------------|--------------------|
| SP120M | 120W | 19.70% | 18.24 | 6.58 | 21.80 | 6.97 | ±3% |

Characteristics

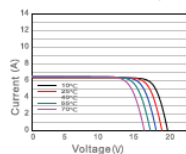
Current Voltage Curve SP120M/32



Power Voltage Curve SP120M/32



Current Voltage Curve SP120M/32



| Mechanical Parameters | | Packing | |
|-----------------------|---------------------------------|----------------|--------------|
| Solar Cell(Type/Size) | MONO(182mm) | Module Type | SP120M-32 |
| Solar Cells Number | 32Pcs(4x8) | Carton Size | 820x780x75mm |
| Dimension | 800x760x30mm | Number | 2Pcs/Ctn |
| Weight | 7.30Kg/Pcs | Weight | 15Kg/Ctn |
| Tempered Glass | 3.2 mm High Permeability Coated | Volume | 0.048Cbm/Ctn |
| Frame | Anodized aluminum alloy | 20GP Container | 1284Pcs |
| Junction Box | IP67, 1*bypass diode | 40HQ Container | 2880Pcs |
| Cable | 2.0mm², (+)500mm/(-)500mm | | |
| Connector | Original MC4/Compatible MC4 | | |
| Mechanical Load | Front 5400PA/back 2400PA | | |

STC: ☀️ Light intensity 1000W/m², 🔋 Battery temperature: 25°C, ☁️ atmosphere quality=15

NOCT: ☀️ Light intensity 800W/m², 🔋 Battery temperature: 20°C, ☁️ atmosphere quality=15, 🌬️ wind velocity 1m/s